

Quilter's Creative *Touch*[™] Software

Installation Guide for the 14+ Quilter



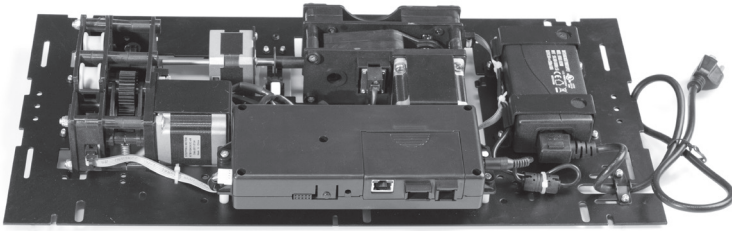
Customer Help-line: 1-800-264-0644

Table Of Contents

Topic	Page
Parts List	1
Step 1: Motor Plate Setup	2
Step 2: Installing Power Strip	3
Step 3: Belt Bracket Clamp and Tensioner	4
Step 4: Belt Clamp to Frame End.....	7
Step 5: Belt Tensioner to Frame End.....	6
Step 6: Threading the Frame Belt (Long Belt).....	10
Step 7: Threading the Belt Bracket Belt (Short Belt).....	11
Step 8: Belt Alignment.....	12
Step 9: Tablet Mount Installation	13
Step 10: Tablet Tray Installation	15
Step 11: Cord Set Up.....	16
Final Installation Checklist.....	18

Parts List

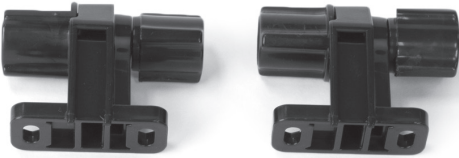
Motor Plate



Power Strip



Belt Tensioner (2)



Belt Clamp Front (2)



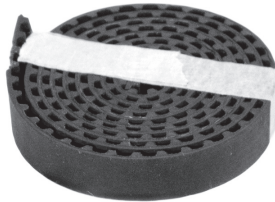
Belt Clamp Back (2)



Long Belt



Short Belt



Tablet Tray Bracket

Allen Wrench
M4 and M3

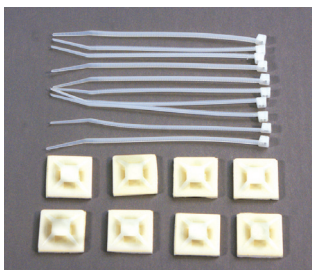


Top Belt Bracket

M6 X 20MM Hex Head (2)



Zip Ties ()
and Plastic Tie Mounts (8)



Plastic Cable Wrap (2)



Velcro Ties (10)
(Not Pictured)

Carriage Clamps (5)



M5 x 25mm SCHS 2



M5 x 13mm SCHS 2



M6 X 10mm
Hex Bolt (2)



M6 X 10mm Socket
Button Head Cap Screw (2)



M6 Hex Nuts (15)



M6 X 14mm Socket
Button Head Cap Screw (7)

10/13 Open Ended Wrench



Important!

Please ensure the Sewing machine is powered off completely before connecting or disconnecting any electrical parts or data cables.

Step 1: Motor Plate Setup

Parts Needed (as shown in Fig. 1-1.):

- Motor Plate
- Frame Bottom Carriage
- M6 x 14mm SBHC Screw (5)
- M6 Hex Nut (5)
- Carriage Clamp (5)
- Allen Wrench (1)

Additional Tools Needed:

- 10MM Wrench (1) Not included

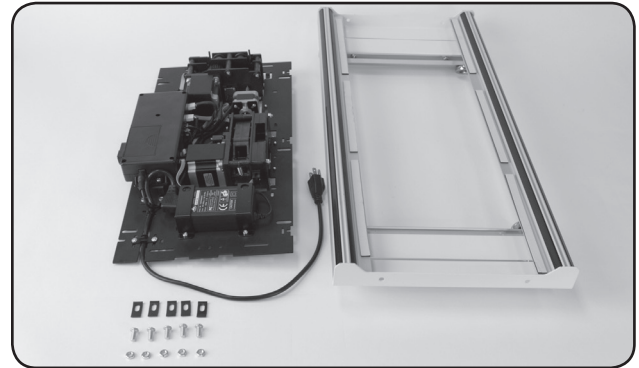


Fig. 1-1

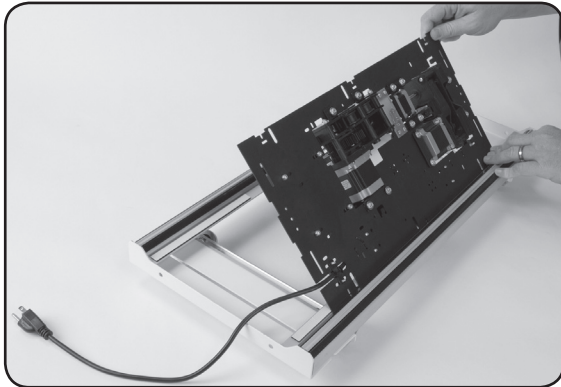


Fig 1-3

Step 1-1: Insert the Motor Plate into the bottom carriage plate at an angle as shown in **Fig 1-3**.

Step 1-2: Attach the Motor Plate to the Bottom Carriage using the **(5) Carriage Clamps** and the **(5) M6 x 14mm SBHC Screws** and **(5) M6 Hex Nuts**, as shown in **Fig. 1-4** through **1-7**. **Do not** tighten the nuts all the way, as you will need to align the plate with the belts in a later step.

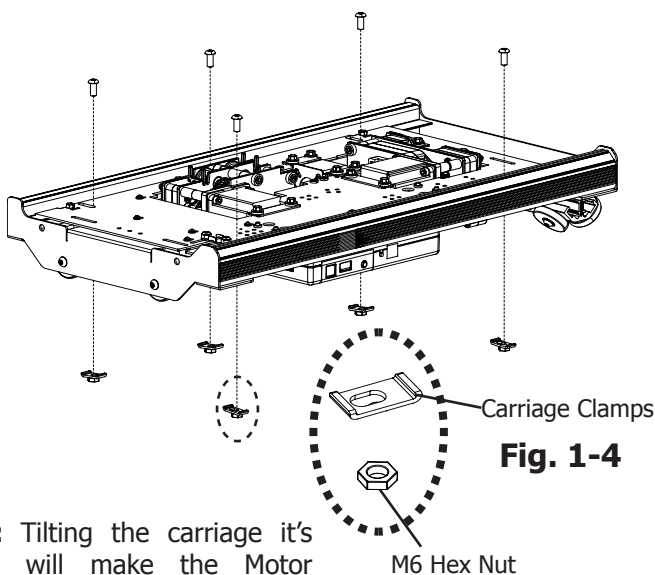


Fig. 1-4

Tip: Tilting the carriage it's side will make the Motor Plate easier to manage while installing the Carriage Clamps

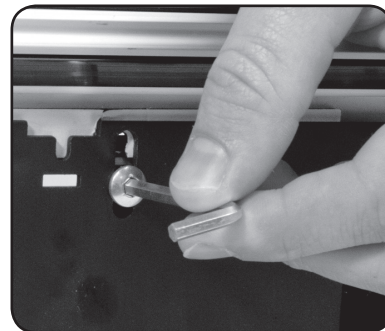


Fig. 1-5

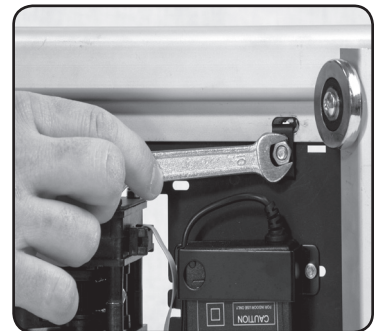


Fig. 1-6

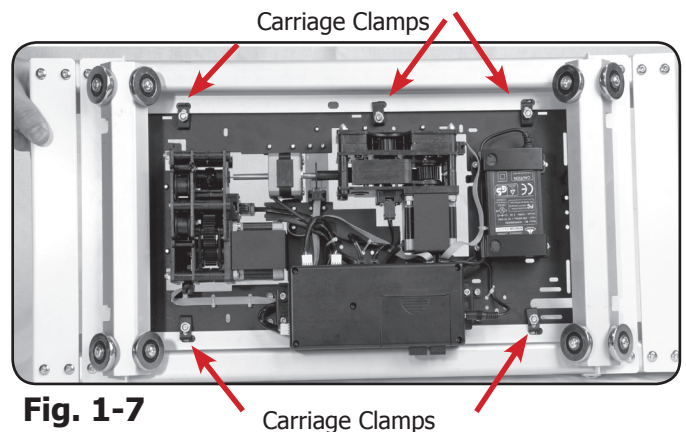


Fig. 1-7

Carriage Clamps

Step 2: Installing Power Strip

Parts Needed:

- Frame Bottom Carriage (1)
- Power Strip (1)
- M6 x 10mm SBHC Screw (2)
- M6 Hex Nut (2)
- Allen Wrench (1)

Additional Tools Needed:

- 10MM Wrench (1)

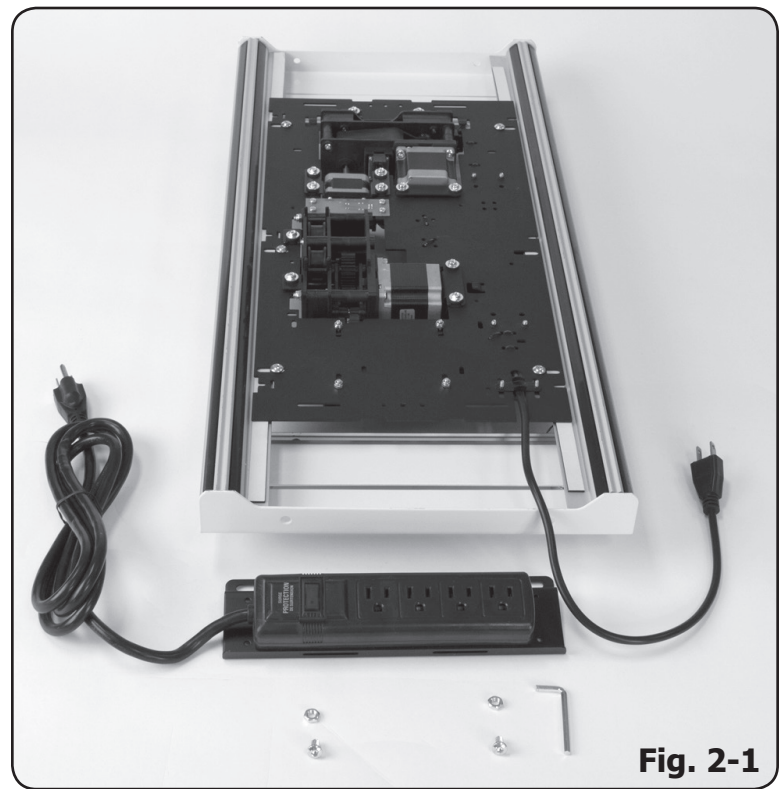


Fig. 2-1

Step 2-1: Attach the Power Strip to the Bottom Carriage using the **(2) M6 x 10mm SBHC Screws** and **(2) M6 Hex Nuts** as shown in **Fig. 2-1** and **2-2**. Plug the Motor Plate into the Power Strip as shown in **Fig. 2-2**.

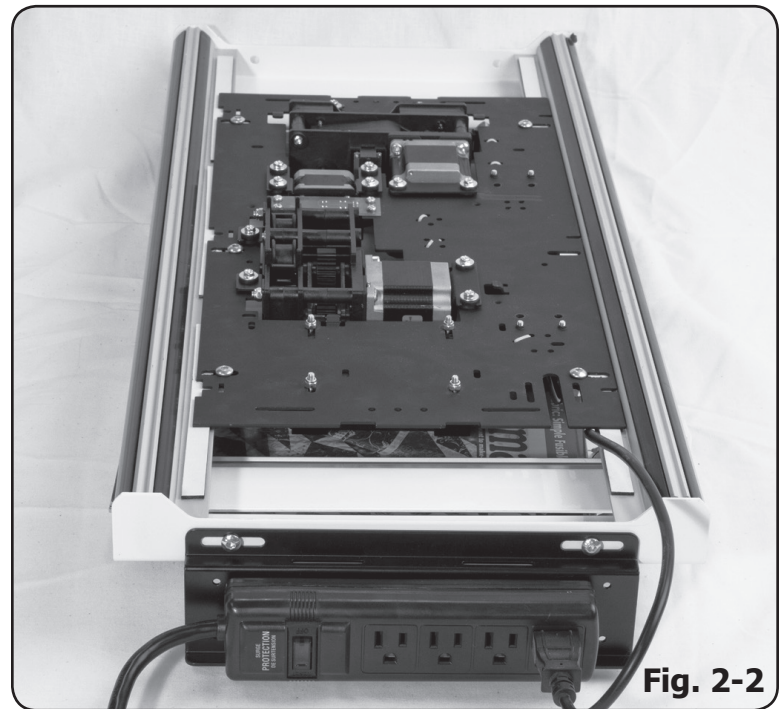


Fig. 2-2

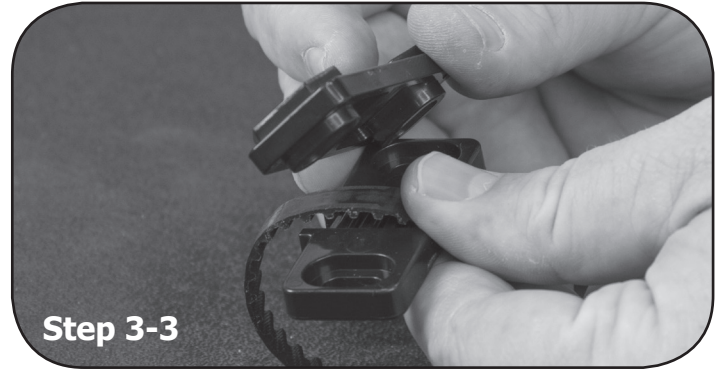
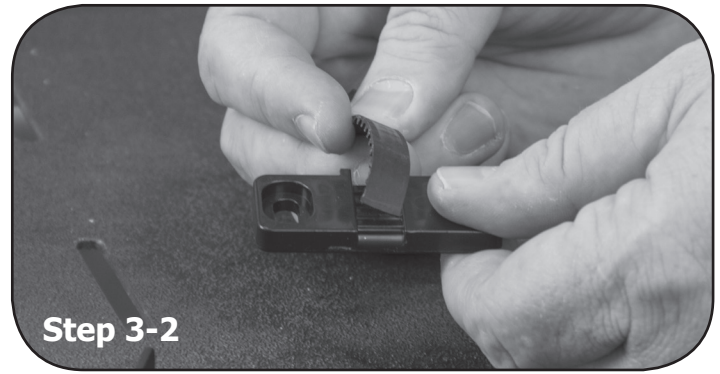
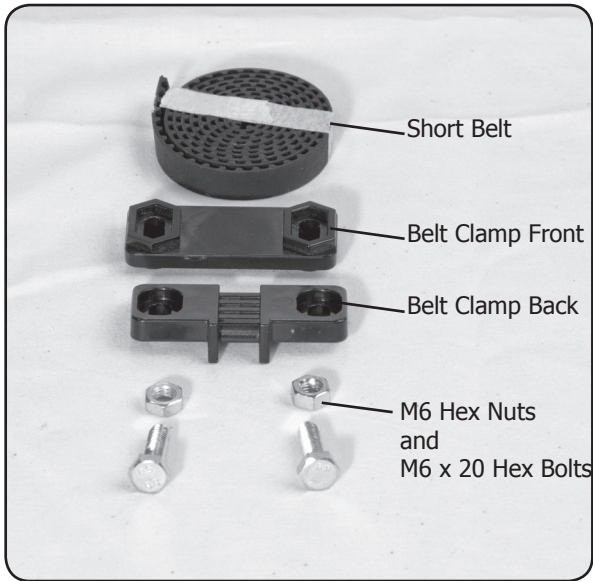
Step 3: Belt Bracket, Clamp and Tensioner

Parts Needed:

- Belt Bracket (1)
- Belt Tensioner (1)
- Belt Clamp Front (1)
- Belt Clamp Back (1)
- Short Belt (1)
- M6 x 10mm Hex Bolt (2)
- M6 x 20mm Hex Bolt (2)
- M6 Hex Nut (4)

Additional Tools Needed:

- 10MM Wrench (1)



Step 3-1: Remove tape from the Short Belt and the Belt Clamp.

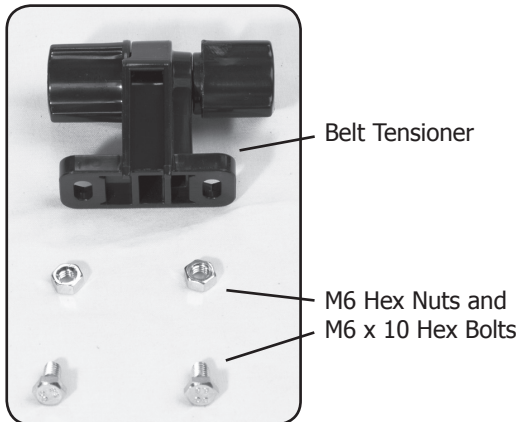
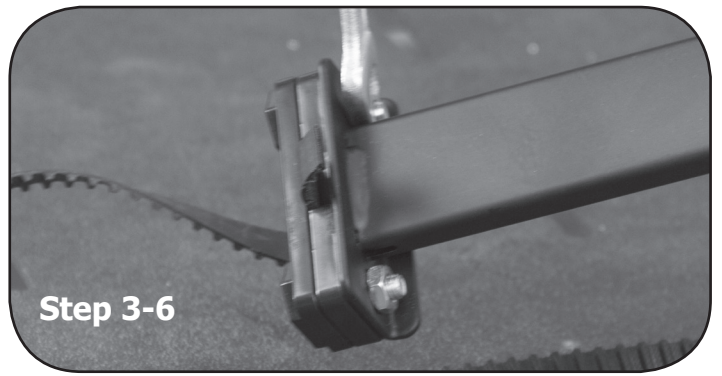
Step 3-2: Place one end of the Short Belt into the Belt Clamp Back.

Step 3-3: Place the Belt Clamp front over the belt.

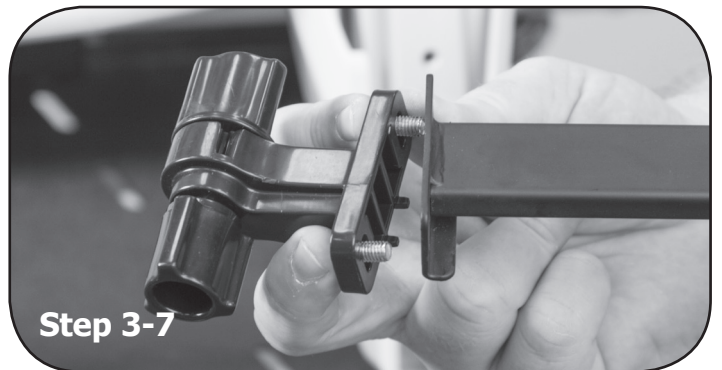
Step 3-4: Using **(2) M6 x 20mm Hex bolts** put them through the Belt Clamp assembly.

Step 3-5: Place the completed assembly onto on end of the Belt Bracket.

Step 3-6: Using the **(2) M6 Hex Nuts** affix the completed Belt Clamp onto the Belt Bracket.

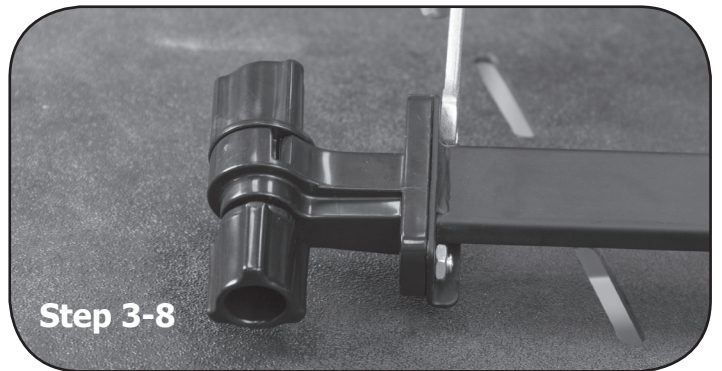


Step 3-7: Take one of the Belt Tensioners, and using the **(2) M6 x 10mm Hex bolts** place the bolts through the holes of the Belt Tensioner.



Step 3-8: On the opposite end of the Belt Bracket affix the Belt Tensioner to the Belt Bracket using the **M6 Hex Nuts**.

**** Note the way that the teeth on the belt are facing, they should be facing up or towards the Belt Bracket.**



Step 3: Belt Bracket to Sewing Machine

Parts Needed:

- Completed Belt Bracket (1)
- M6 x 20 SBHCS (2)

Tools Needed:

- Allen Wrench (1)

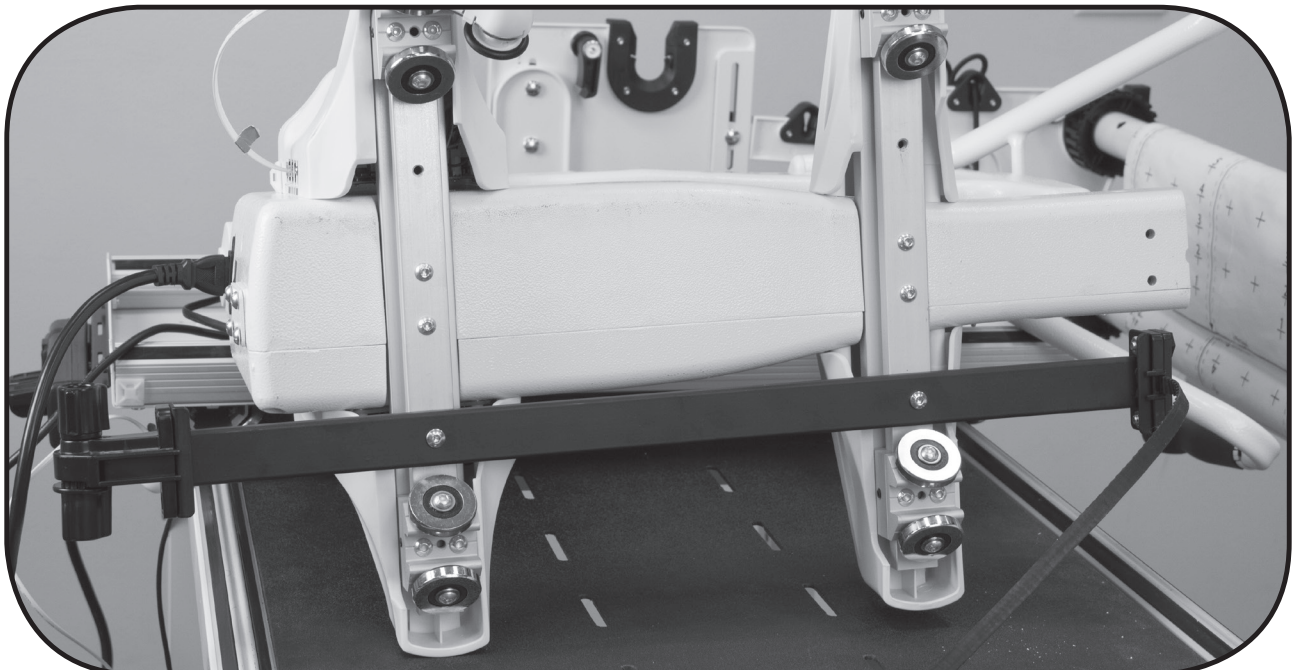
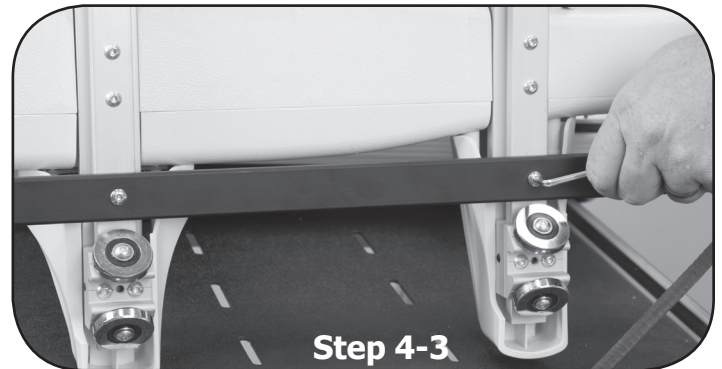
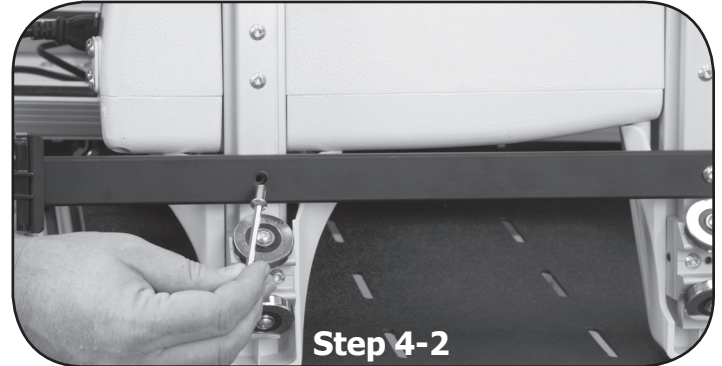
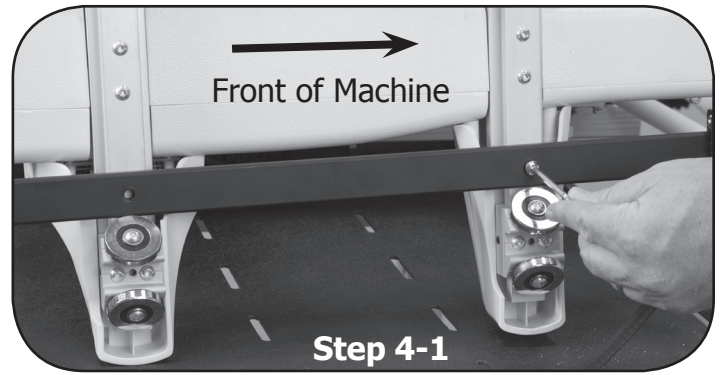
Turn the Machine on its side. You will be attaching the belt Bracket to the right side of the axle of the machine. This would be the right side if you were standing at the head of the machine, at the handle bars.

Step 3-9: Using one of the **M6 x 20 SBHCS** attach the Belt Bracket to the right side of the axles on the sewing machine. Do not tighten the bolt all the way as adjustments may be needed.

Step 3-10: Align the other hole of the Belt Bracket to the hole on the machine axel and using the **M6 x 20 SBHCS** attach the Belt Bracket.

Step 3-11: Go back and tighten the opposing bolt.

Leave the belt loose at this time as we will be feeding it into the Motor Plate in a few steps.



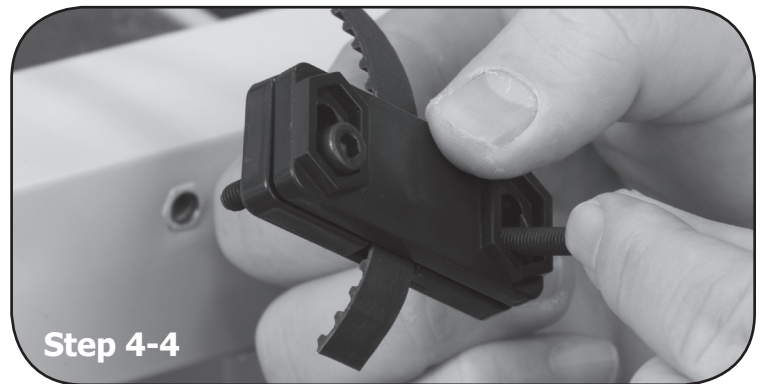
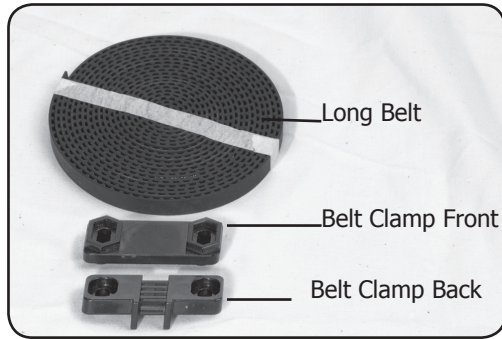
Step 4: Belt Clamp to Frame End

Parts Needed:

- Belt Clamp Front (1)
- Belt Clamp Back (1)
- Long Belt (1)
- SCS M5 x 25 (2)

Additional Tools Needed:

- Allen Wrench (1)



Step 4-1: Remove tape from the Long Belt and the Belt Clamp.

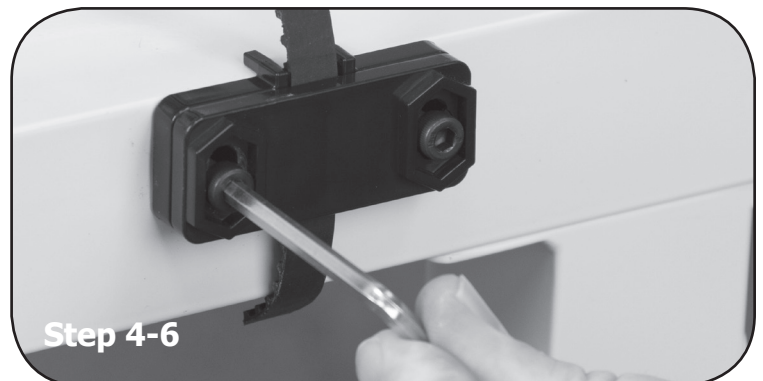
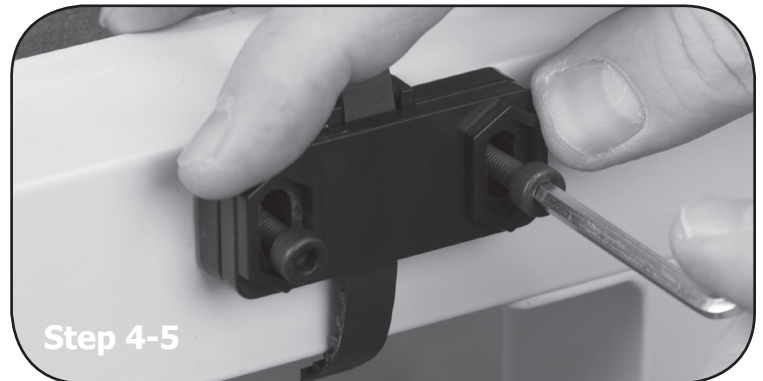
Step 4-2: Place one end of the Long Belt into the Belt Clamp Back.

Step 4-3: Place the Belt Clamp front over the belt.

Step 4-4: Using (2) M5 x 25 , put them through the Belt Clamp assembly.

Step 4-5: Place the completed assembly onto a frame end.

Step 4-6: Tighten the (2) M5 x 25 to the frame.



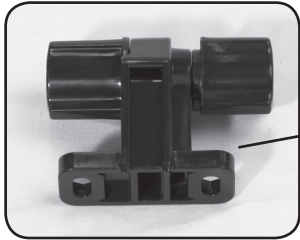
Step 5: Belt Tensioner to Frame End

Parts Needed:

- Belt Tensioner (1)
- M5 x 16 (2)

Additional Tools Needed:

- Allen Wrench (1)



Belt Tensioner

In order to affix the Belt Tensioner to the frame we must disassemble it.

Step 5-1: Hold one knob of the Tensioner.

Step 5-2: Unscrew to opposite side.

Step 5-3: Remove the knobs of the Tensioner.

Step 5-4: Using the **(2) M5 x 16** insert them into the holes on the Belt Tensioner.

Step 5-5: Place the Tensioner onto the opposite side of the frame from the Belt Clamp.



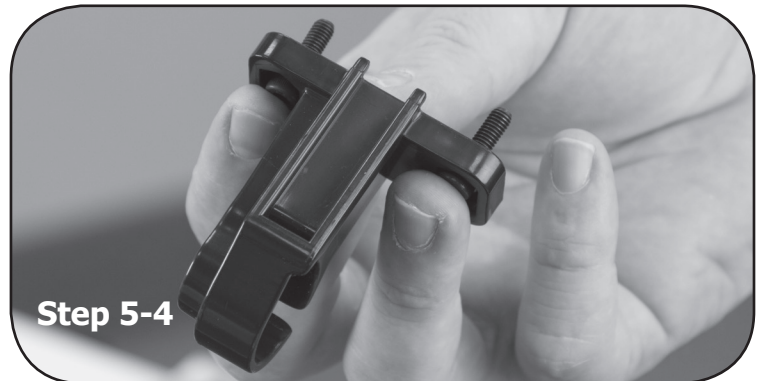
Step 5-1



Step 5-2



Step 5-3

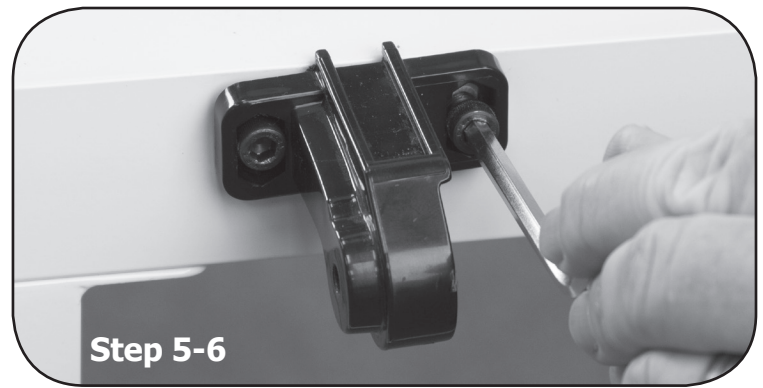


Step 5-4



Step 5-5

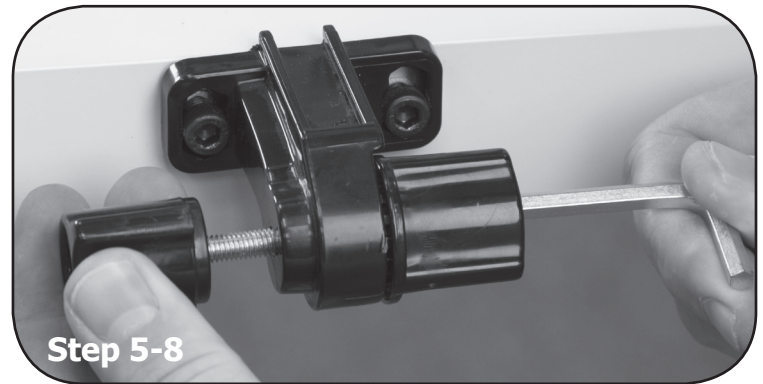
Step 5-6: Tighten the bolts onto the frame.



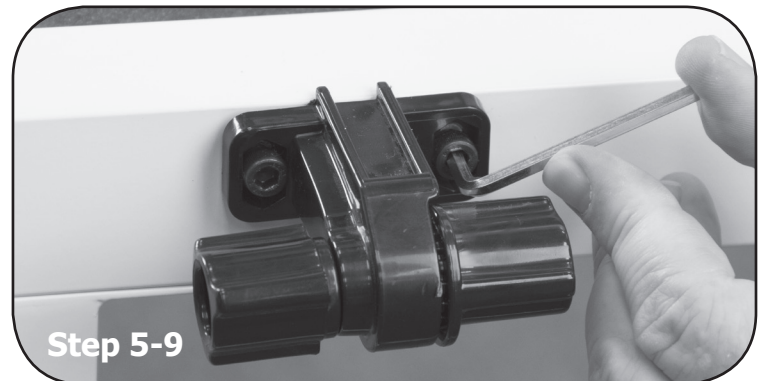
Step 5-7: Using the same Allen Wrench place it into the knob side with the bolt in it. This will keep the bolt from coming out when attached the opposite side.



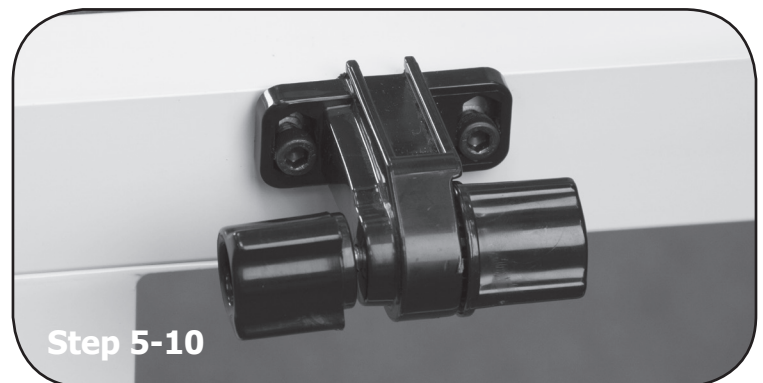
Step 5-8: Insert the Knob with the bolt into the Tensioner Fixture.



Step 5-9: Attach the other Knob to the Tensioner assembly.



Step 5-10: If needed finished tighten the Belt Tensioner Assembly to the Frame.



Step 6: Threading the Belts through the Motor Plate - Frame

Parts Needed:

-Bottom Carriage with Motor Plate installed(1)

6-1: Tilt the Carriage onto its side.

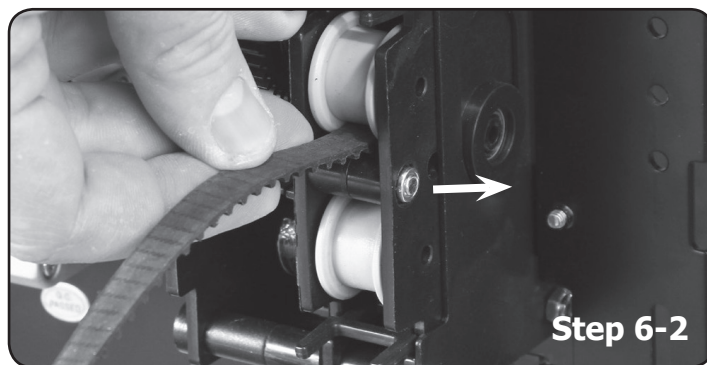
6-2: Thread the Long Belt into the gear box in the Motor Plate from the bottom until it comes out the top of the carriage.

6-3: Loop the belt over and feed the belt back through the gear box, until it comes back out of the bottom.

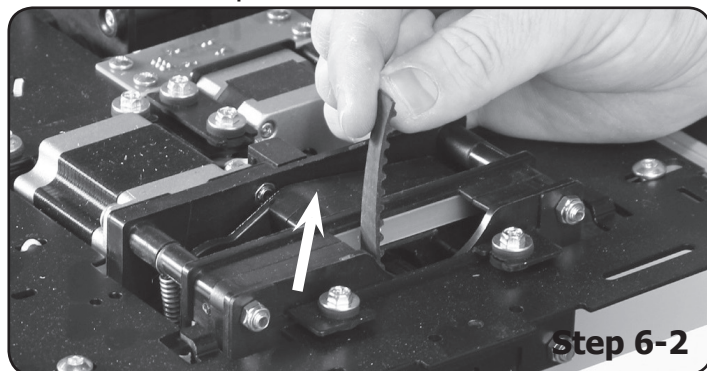
6-4: Pull the rest of the slack through the Motor Plate to the Belt Tensioner, but do not insert the belt into the Tensioner yet.

Lay the carriage back onto the frame track.

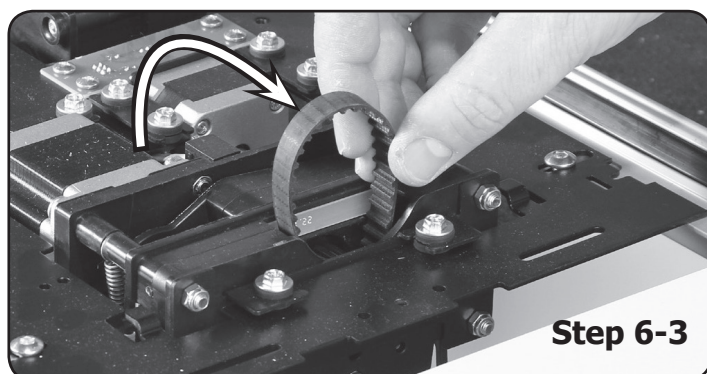
Bottom of the Motor Plate



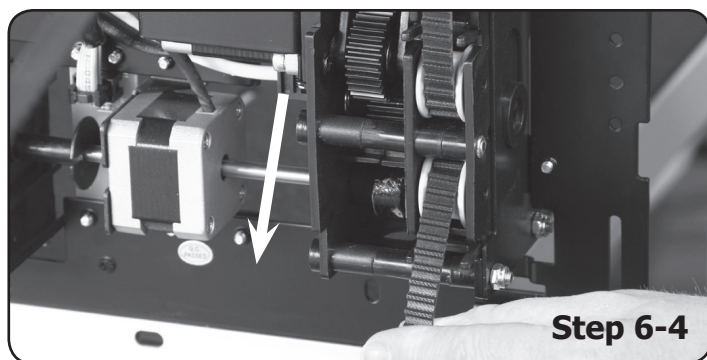
Top of the Motor Plate



Bottom of Quilt



Bottom of Quilt



Step 7: Threading the Belts through the Motor Plate - Belt Bracket

Parts Needed:

- Machine with Belt Bracket attached (1)
- Bottom Carriage with Motor Plate installed(1)

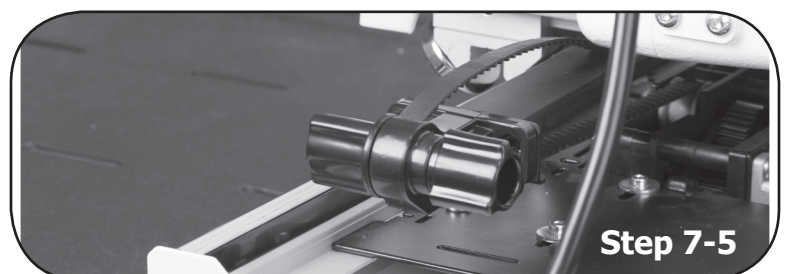
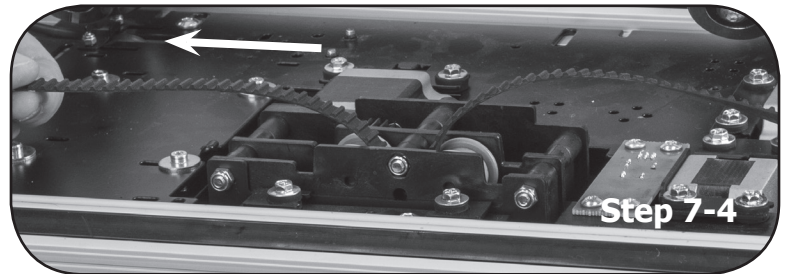
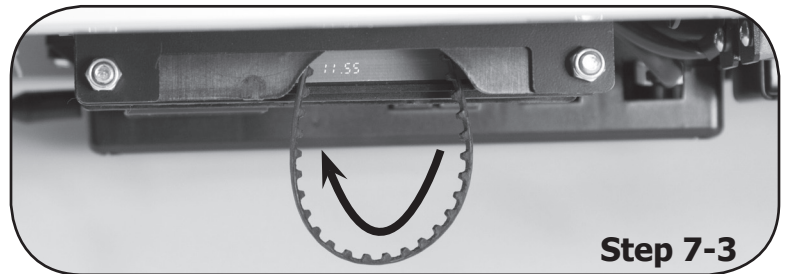
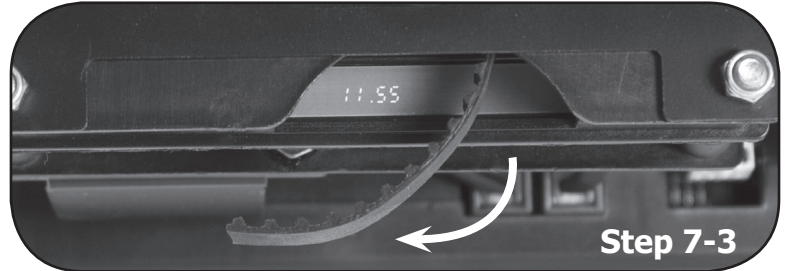
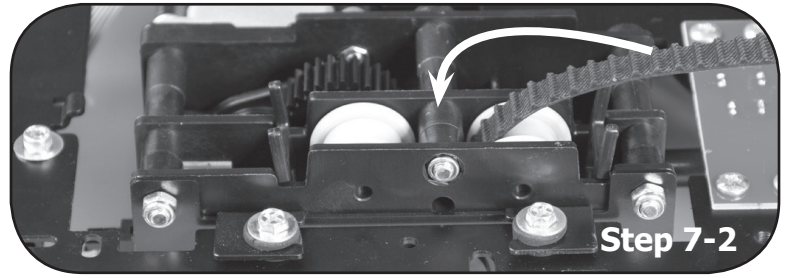
7-1: Place the machine close to the bottom carriage at an angle. This way you can access the belt that goes front to back and will be fed through the Motor plate

7-2: Feed the Short Belt from the Belt Clamp into the top of the gear box on the Motor Plate.

7-3: Loop the belt back up through the gear box so it comes out of the top again.

7-4: Pull the belt through the Motor Plate, place the machine onto the Bottom Carriage.

7-5: Feed the free end of the Short Belt into the Belt Tensioner, turn the knob to tighten the belt all the way through the Tensioner.

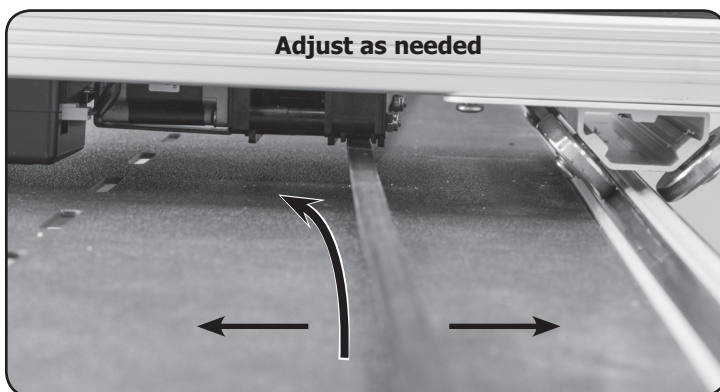
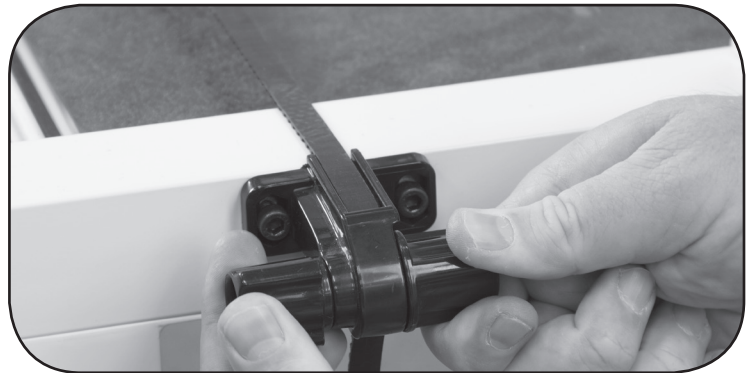
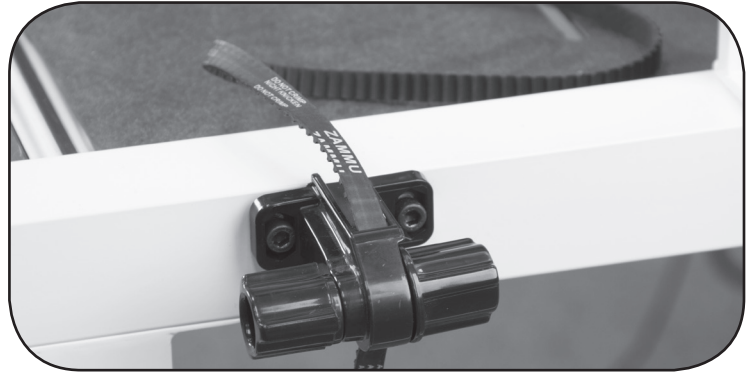
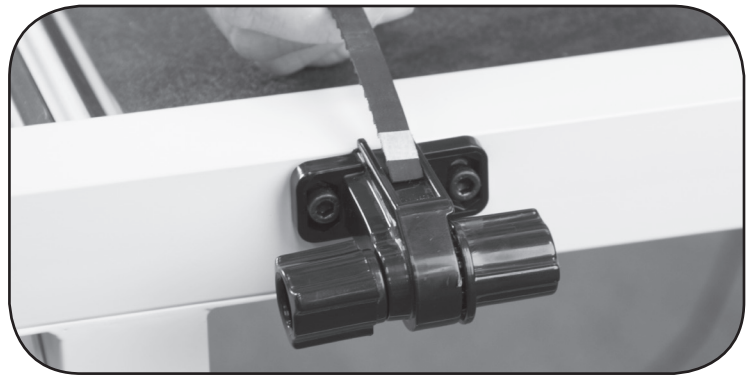


Step 8: Belt alignment

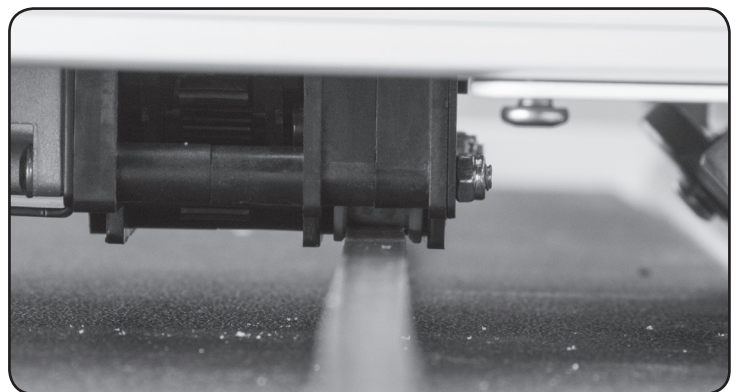
Once the machine has been placed onto the bottom carriage you can insert the free end of the long belt into the Belt Tensioner on the frame and tight the belt up.

Once the belt has been tightened look down the length of the belt, as shown below.

Ensure there is not a bow or bend in the belt.



Bow in the belt.
Requires adjustment.



Straight belt.
Does not Require adjustment.

Step 9: Tablet Mount Installation

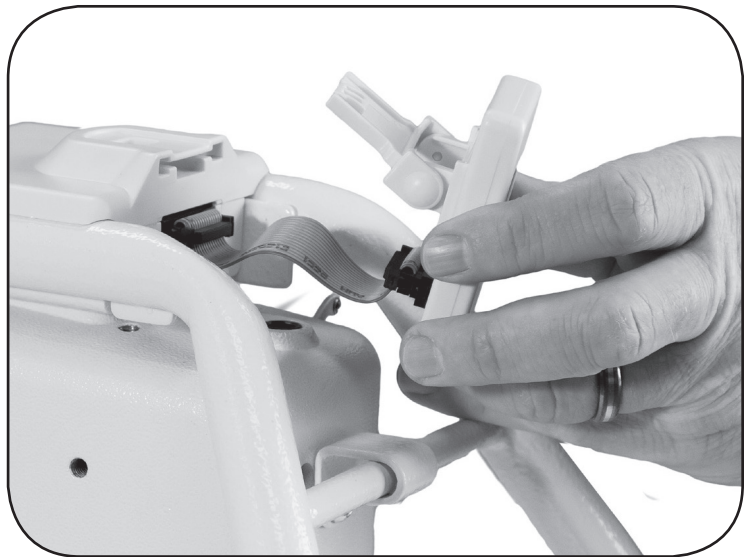
Parts Needed:

- Tablet Mount (1)
- M3 Allen Wrench(1)

Before installing the Tablet bracket, you must first remove the OLED on the sewing machine.



Press down on the clip on the top of the OLED clip on the display mount and pull the OLED straight out.

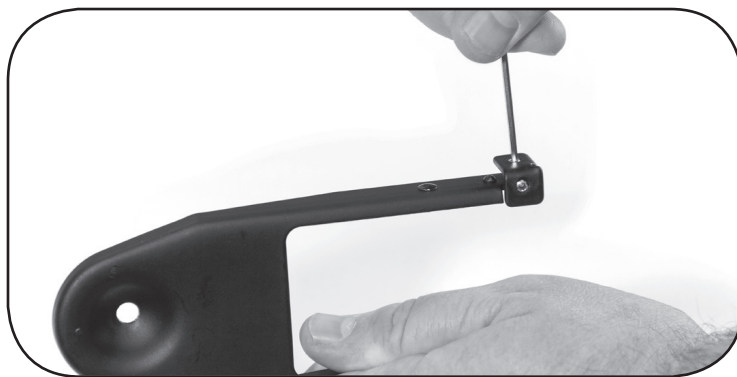


After the display has been removed disconnect the ribbon cable attached to the display mount.



Step 9: Tablet Mount Installation Continued

Using the M3 Allen wrench, loosen all four set screws on the tablet mount.



Place the Tablet mount onto the handle bars as shown here. You will notice the tabs, which have been circled, are not allowing the mount to be pushed onto the handlebar bracket.



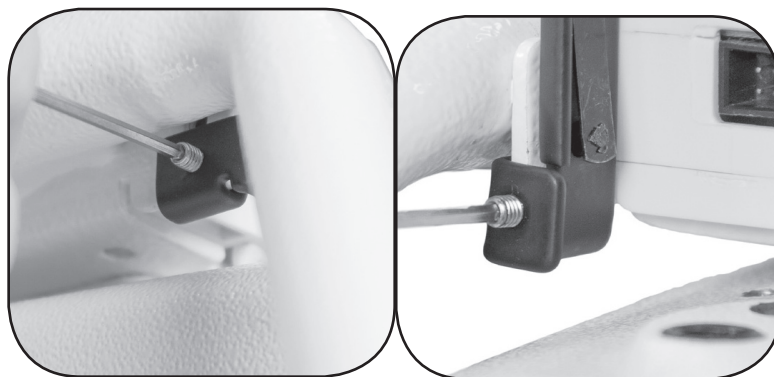
Use the Allen wrench provided to push the tab inwards, this will allow the tab to go over the metal part of the handlebars and lock into the hole on the handlebars. Push the Tablet Mount back until the bottom part is flush with the handlebar bracket.



Repeat this step on the opposite side.



Tight all four set screws, starting with the outside ones first, and then the front ones.



Step 10: Tablet Tray Installation

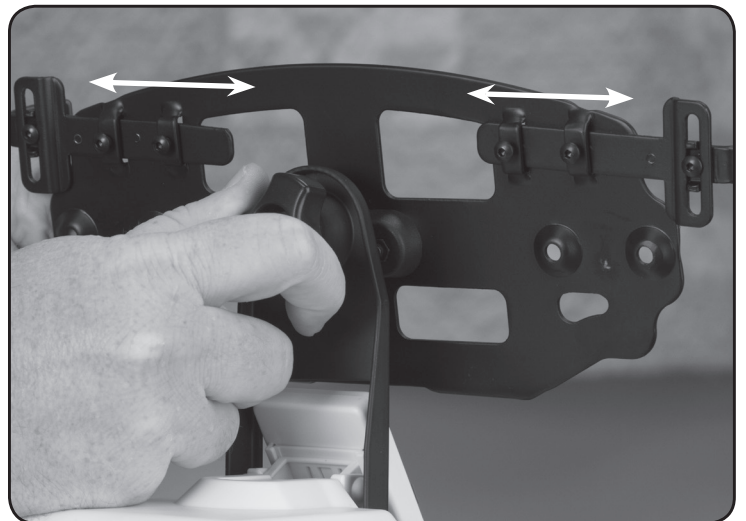
Parts Needed:

- Tablet Tray (1)
- Tray Knob (1)

Place the bolt on the back of the Tablet tray through the hole on the tablet tray mount.

Using the Knob provided, affix it to the bolt on the rear of the Tablet tray and tight the Knob all the way.

If necessary, based on your tablet, you can adjust the arms on the mount to fit your device before mount the Tablet Tray.



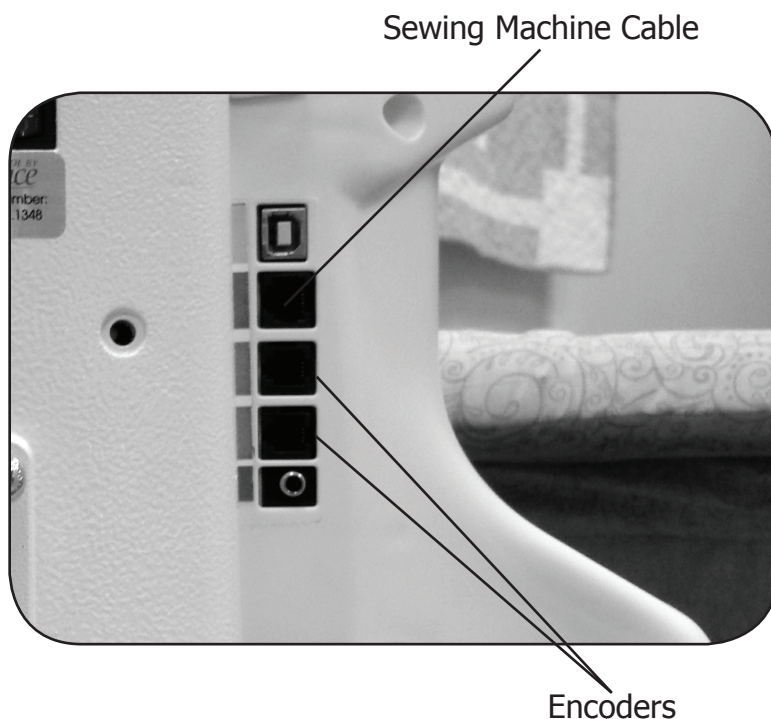
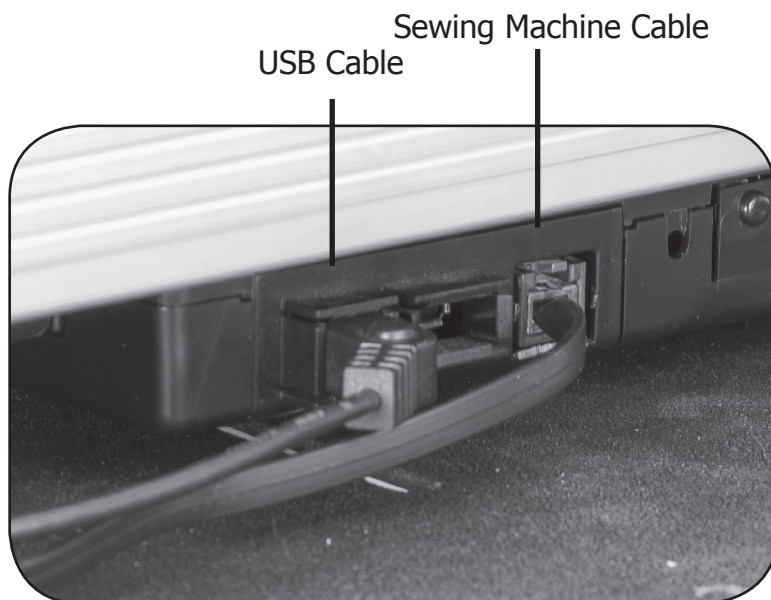
Step 11: Cord Set Up

Parts Needed:

- Computer USB cord (1)
- Sewing Cable (1)
- Plastic Tie Mounts (10)
- Velcro Ties (6)
- Plastic Cable Wrap (2)

Connect the USB cable to the Motor Plate unit as shown. The other end will connect to your Tablet/Computer.

Attached the Sewing cable as shown here. The other end will connect to the back of the sewing machine.

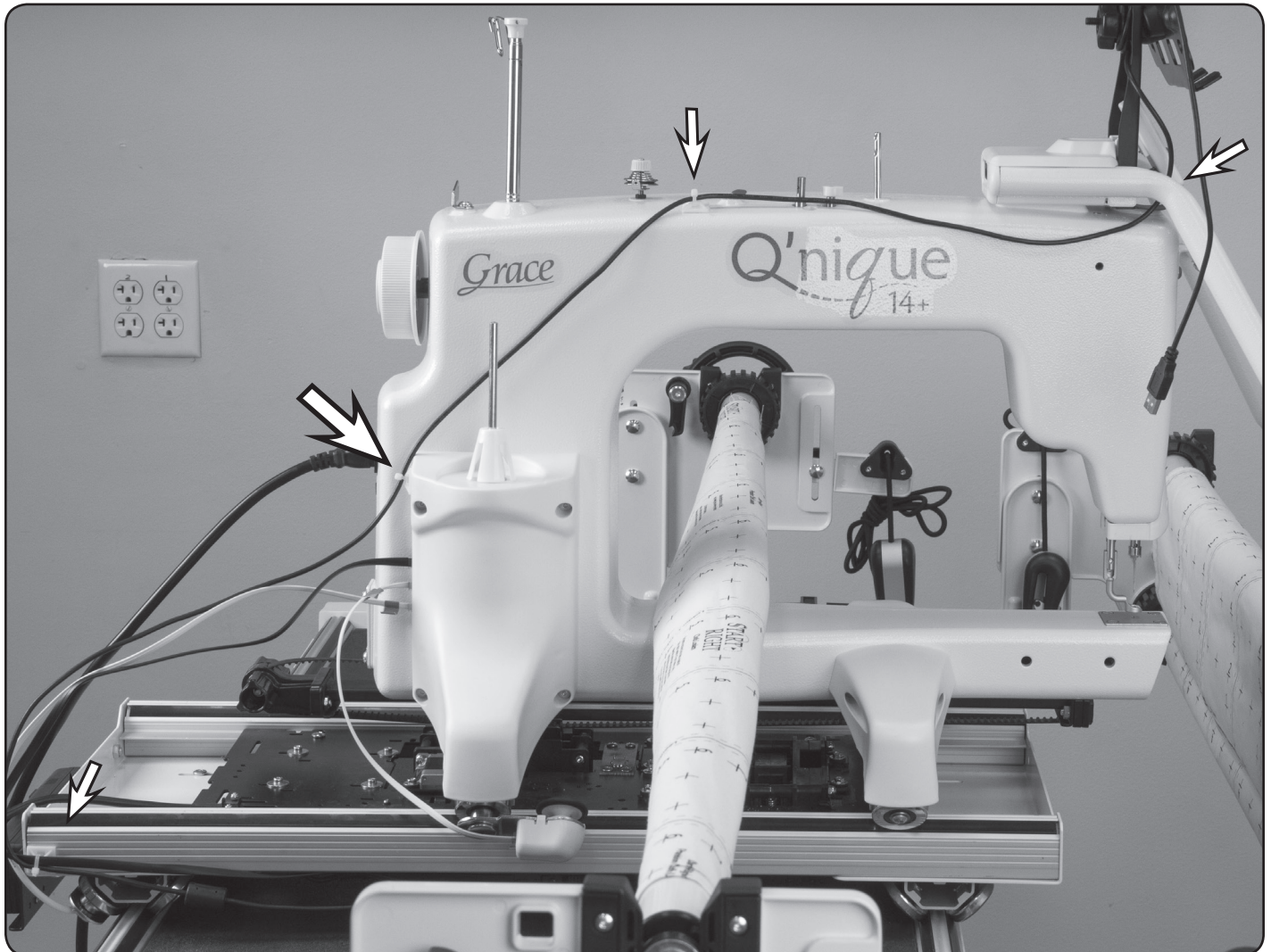


Step 11: Cord Set Up, continued.

Shown below, is the recommended cable setup for Quilt when connecting to a Q'nique sewing machine. Plastic mount locations are shown with arrows. Additional Velcro Ties, Zip Ties, and mounts may be used as needed.

When installing the cables, make sure there is enough slack remaining to allow the full range of movement from the carriage on the frame front to back. You can use the take up rail as a guide for your maximum range.

Any extra cable slack should be looped up to avoid any snags.

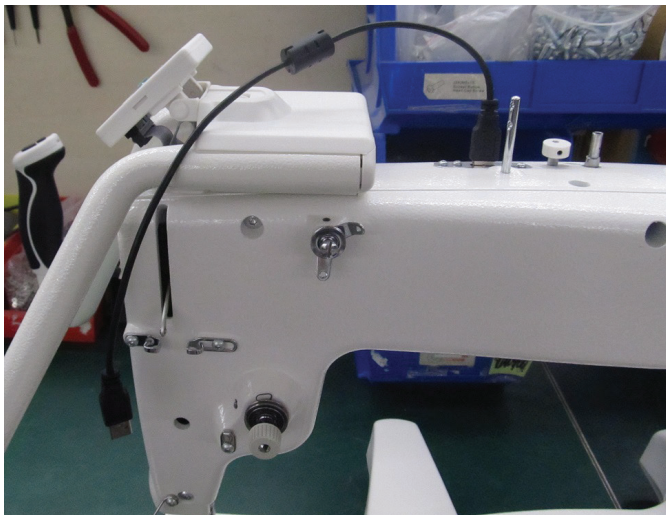
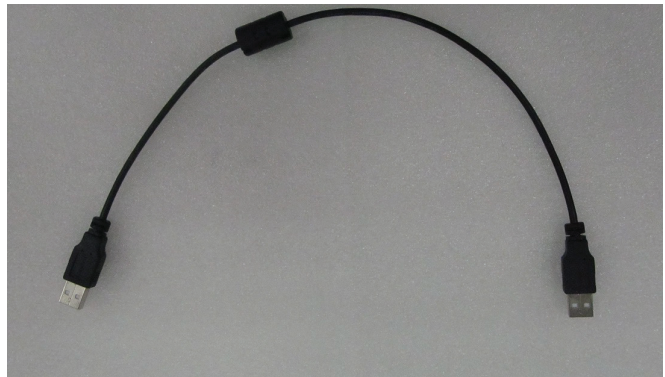


P2 USB Cable Instructions

Machine to Motor Plate USB



Machine to Tablet USB



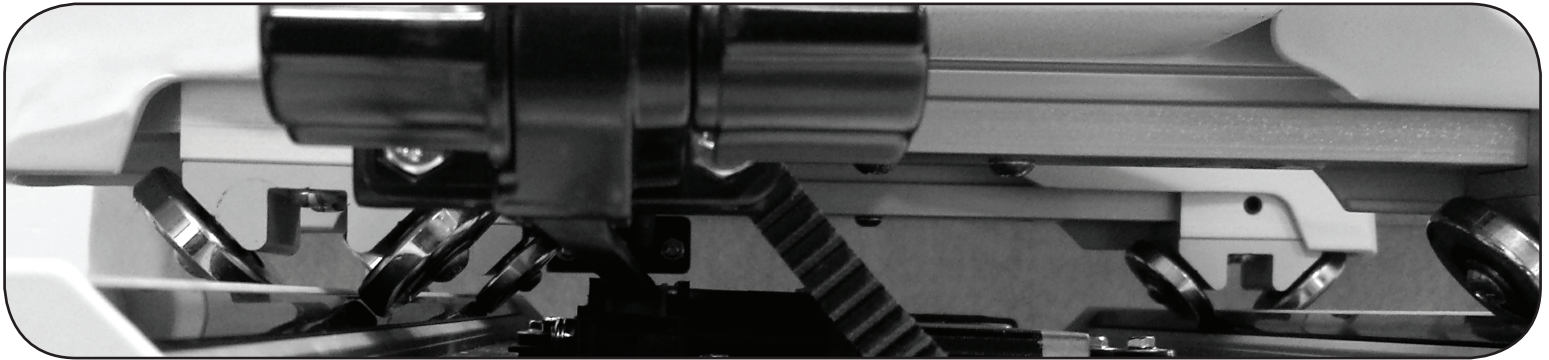
The small USB cable (Machine to Tablet) gets plugged in the top of the machine and the other side plugs in to your tablet on the tablet tray.



The bigger USB cable (Machine to Motor Plate USB) gets plugged in the back of the machine. The other side, after machine is in place on the carriage and frame, will hook into the Motor Plate under your machine. As shown below.



Finally check the alignment of the belt attached to the Belt Bracket.
It is possible it may be slightly bowed to one side.



To address this you can adjust the wheels on the sewing machine by loosening the highlighted set screws shown below.

Then shift the machine over to ensure the belt is straight.

Once aligned tight the set screws.

Please note this must be done on all four sets of wheels not just the two in the rear.



Final Installation Checklist

1. Is the Motor Plate securely attached to the bottom Carriage?
2. Is the "Y" axis (short) belt correctly threaded through the gear box?
3. Is the "Y" axis (short) belt correctly aligned and the Tensioner/clamp bolts on the upper Carriage tight?
4. Is the "X" axis (long) belt correctly threaded through the gear box?
5. Is the "X" axis (long) belt correctly aligned and the Tensioner/clamp bolts on the frame securely fastened?
6. Are the USB fully inserted into the motor plate? The connectors can be tight and appear fully inserted, but may not make connection.
7. Are the cables securely attached to the carriage with enough slack to enable full front-to-back and side-to-side?



For additional installation or product support for Quilter's
Creative Touch, call The Grace Company directly at:
1-800-264-0644

www.graceframe.com

The Quilter's Creative Touch logo is a
trademark of The Grace Company.
© The Grace Company 2017
Instructions rev.2